

The Amarillo Economy

June 2025



**Amarillo
National
Bank**

Awesome Service

anb.com | (806) 378-8000

Member FDIC | Equal Housing Lender

Slow, steady growth continues in Amarillo, led by continued better employment numbers.

Retail Sales are only up 1.5%, which is less than the rate of inflation, bringing the YTD to 2.6%. Some businesses report a drop in sales and customers due to fears of ICE raids. New Vehicles are up 5% and Used sales are up 9%.

Tourism is up moderately, as Airline Boardings growth has returned, with a 5% increase. Motel Tax is up 3%.

The job market continues to look good, with 2,500 more people working in the Employer's Survey. The Household Survey is up 3,150. Wages are up 4% from last year, and the overall job market continues good, with some shortages among lower paid jobs. Plans continue for the giant AI project east of Amarillo that should give construction a boost when it starts about a year from now.

Building Permits are off for the month 50%, but up 9% YTD. Housing is lower, with 35 starts, down from 45 a year ago, and YTD at 164 is down 30% from the 235 last year. Median House Price is up \$3,800.

Drilling activity has stopped with zero rigs operating in the Panhandle, but existing oil production is benefitting from higher oil and natural gas prices. Both up a third from several months ago.

Rains have benefitted farmers, and the wheat crop being cut looks to be an economic boost, with prices firming from last month, but down 9% from last year. Yields should be much better. Corn prices are flat, and cotton is up a little, but 21% below last year's price levels.

Cattle continue to be profitable, with Fat Cattle prices up 20% and good grass for ranchers at the start of the summer. Milk prices are steady, and area Dairies report profits.



Amarillo Economic Pulse

Economic Components	Current Month	Last Month	One Year Ago
Index (Base Jan. 88 @ 100)	202.29	201.12	202.00
Sales Tax Collection	\$ 8,482,019	\$ 9,900,477	\$ 8,356,717
Sales Tax Collections (Year to Date)	\$ 52,771,450	\$ 44,289,430	\$ 51,425,095
New Vehicle Sales	812	706	775
Used Vehicle Sales	1,836	1,581	1,688
Airline Boardings	38,516	32,545	36,632
Hotel/Motel Receipt Tax	\$ 762,291	\$ 830,522	\$ 738,365
Population	201,106	201,106	201,106
Employment – CLF*	140,579	141,507	137,099
Unemployment Rate*	% 3.10	% 2.70	% 2.90
Total Worker Employed* (Household Survey)	136,288	137,690	133,134
Total Worker Employed* (Employer Survey)	131,700	131,436	129,197
Average Weekly Wages	\$ 1,071.00	\$ 1,071.00	\$ 1,030.00
Gas Meters	70,104	70,160	69,928
Interest Rates (30 year mortgage rates)	% 6.875	% 6.625	% 7.000
Building Permits (Dollar Amount)	\$ 27,087,762	\$ 32,860,687	\$ 54,875,083
Year to Date Permits (Dollar Amount)	\$ 170,451,029	\$ 142,323,046	\$ 156,810,091
Residential Starts	35	26	45
Year to Date Starts	164	129	235
Median House Sold Price	\$ 253,810	\$ 250,000	\$ 272,245
Drilling Rigs in Panhandle	0	1	4
Oil Per Barrel	\$ 75.30	\$ 63.18	\$ 77.82
Natural Gas	\$ 3.99	\$ 3.55	\$ 2.92
Wheat Per Bushel	\$ 6.31	\$ 6.23	\$ 6.96
Fed Cattle Per CWT	\$ 225.00	\$ 215.00	\$ 186.00
Corn	\$ 4.37	\$ 4.35	\$ 4.49
Cotton (Cents Per Pound)	\$ 63.50	\$ 61.00	\$ 80.80
Milk	\$ 18.68	\$ 18.71	\$ 20.00

Time for the obligatory legal babble!

This document was prepared by Amarillo National Bank on behalf of itself for distribution in Amarillo, Texas and is provided for informational purposes only. The information, opinions, estimates and forecasts contained herein relate to specific dates and are subject to change without notice due to market and other fluctuations. The information, opinions, estimates and forecasts contained in this document have been gathered or obtained from public sources believed to be accurate, complete and/or correct. The information and observations contained herein are solely statements of opinion and not statements of fact or recommendations to purchase, sell or make any other investment decisions.

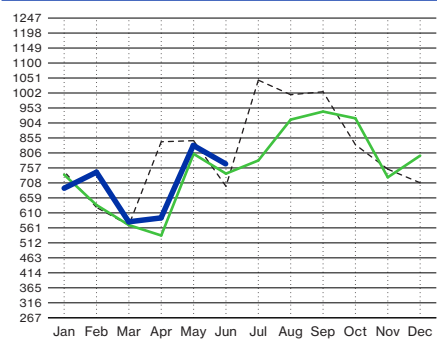
Economic Pulse Charts

2025

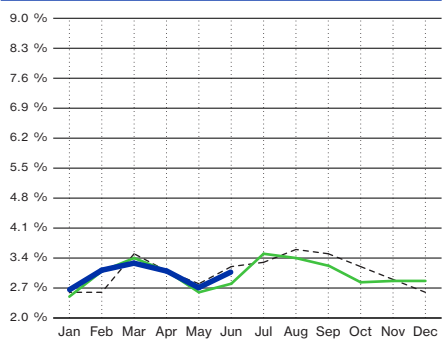
2024

2023

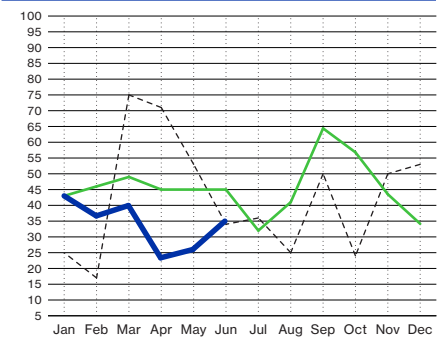
Hotel/Motel Receipt Tax (In Thousands)



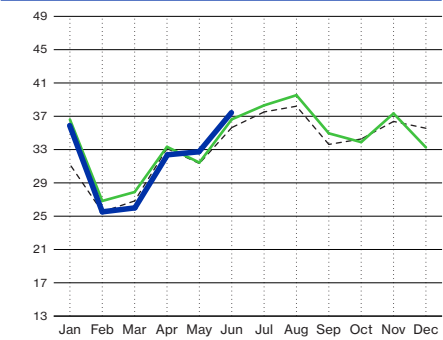
Percent Unemployment (State Adjusted Numbers)



Residential Housing Starts

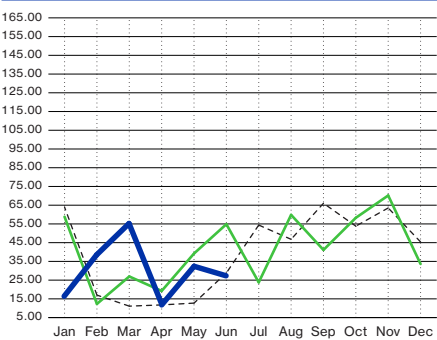


Airline Boardings (In Thousands)

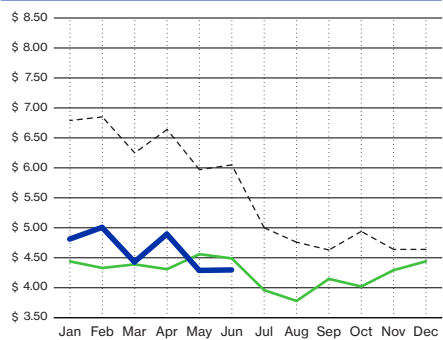


Building Permits

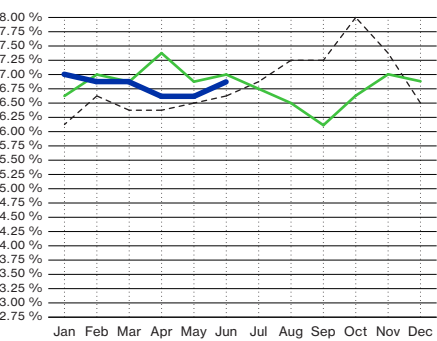
(Residential/Commercial - Millions of Dollars)



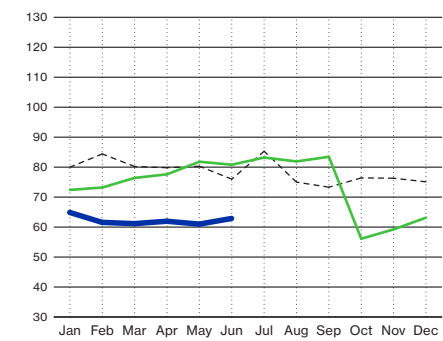
Corn (Price Per Bushel)

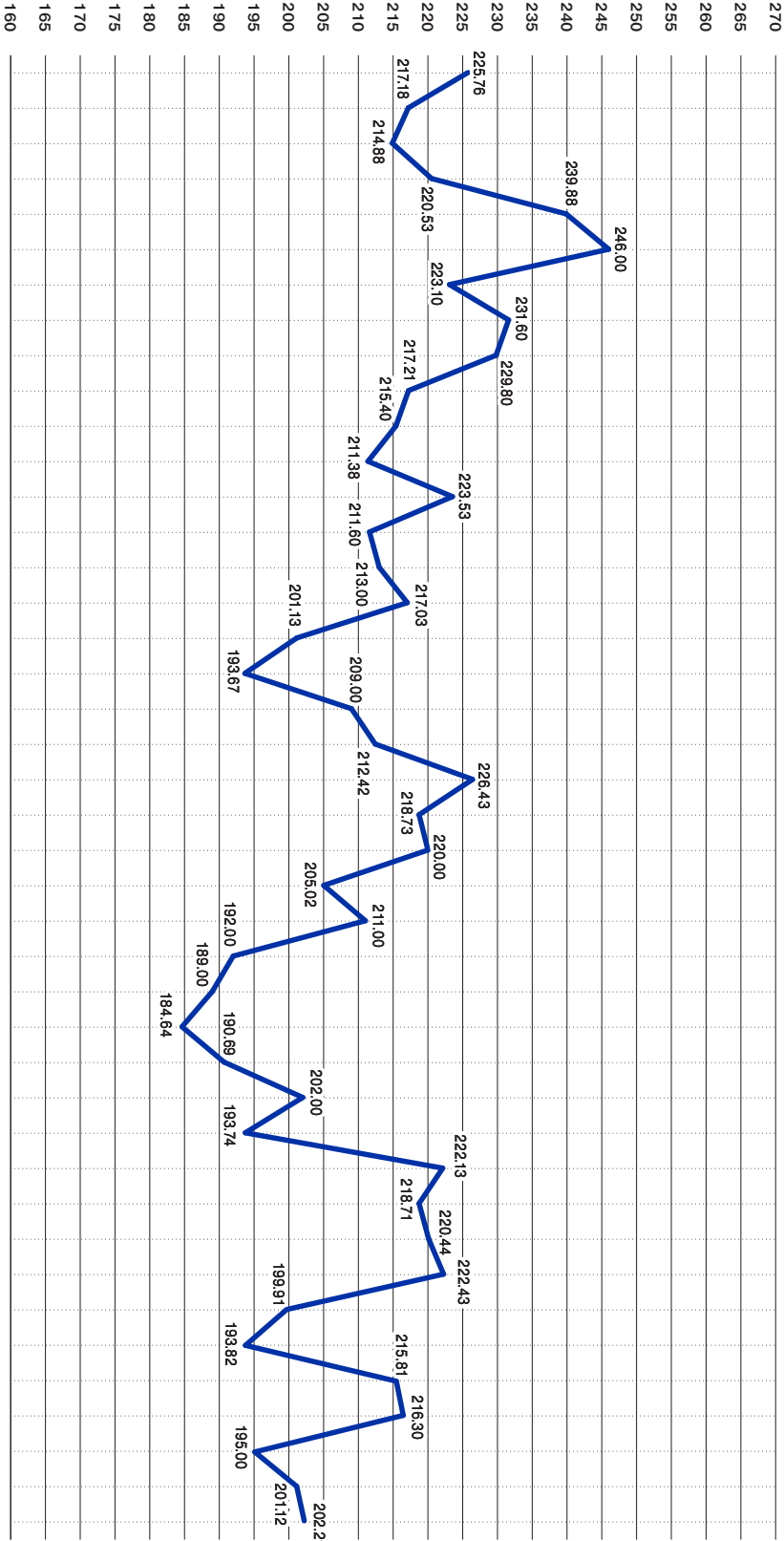


Interest Rates (30 Year Mortgage Rates)



Cotton (Cents Per Pound)





Amarillo by Mornin'

Up from **San Antone**,
and **Austin**,
and **Bryan/College Station**,
and **Fort Worth**,
and **Lubbock**.
and **Canyon**,
and **Borger...**



anb.com | (806) 378-8000

Member FDIC | Equal Housing Lender



**Amarillo
National
Bank**

Awesome Service