

The Amarillo Economy

December 2025



**Amarillo
National
Bank**

Awesome Service

anb.com | (806) 378-8000

Member FDIC | Equal Housing Lender

Amarillo's economy ended the year in a fairly good position, with jumps in retail sales and housing, while other activities stayed stable.

Sales tax collections are up 11.5% from last year (with some of this possibly an audit catch up). YTD sales are up 4.4%. New and Used vehicle sales are about flat, with auto dealers reporting less business than last year.

Motel collections remain strong, with a 7.6% jump, but Airline Boardings have turned negative the last two months, down 2%. We are waiting for the employment numbers from the state and federal government. Our categories are probably in good shape; however, the January lay off of 1,700 workers at Tyson will have a negative impact next year.

Mortgage rates have declined from 6.9% to 6%, and monthly housing starts are double what they were last year, bringing the YTD slightly below 2024. Commercial construction was strong at the first of the year, but is slowing in the fourth quarter. Prices of houses that sold are up almost 6%.

The energy sector is mixed, with a sharp drop in the price of oil, but area producers that have natural gas are benefiting from the 30% increase in prices. There is only one drilling rig operating.

Commodity prices are flat to down for farmers, with wheat and cotton off about 15%, while corn is flat. Cattle will continue to have a fine year, with prices up 20%. Milk prices are down 15%, but dairies have been able to make a profit, since they usually raise their own cattle.

Our Forecast will be out soon detailing each of these categories.



Amarillo Economic Pulse

Economic Components	Current Month	Last Month	One Year Ago
Index (Base Jan. 88 @ 100)	220.00	230.00	199.91
Sales Tax Collection	\$ 9,393,313	\$ 10,109,171	\$ 8,424,213
Sales Tax Collections (Year to Date)	\$ 108,643,286	\$ 99,249,972	\$ 104,078,244
New Vehicle Sales	725	944	708
Used Vehicle Sales	1,478	1,913	1,431
Airline Boardings	32,620	38,348	33,318
Hotel/Motel Receipt Tax	\$ 857,197	\$ 824,050	\$ 796,648
Population	201,106	201,106	201,106
Employment – CLF*			141,789
Unemployment Rate*	%	%	% 3.10
Total Worker Employed* (Household Survey)			137,352
Total Worker Employed* (Employer Survey)			131,900
Average Weekly Wages	\$ 1,071.00	\$ 1,071.00	\$ 1,052.00
Gas Meters	69,337	69,210	69,399
Interest Rates (30 year mortgage rates)	% 6.000	% 6.125	% 6.875
Building Permits (Dollar Amount)	\$ 33,380,965	\$ 38,979,111	\$ 33,997,851
Year to Date Permits (Dollar Amount)	\$ 699,300,133	\$ 665,721,677	\$ 456,447,517
Residential Starts	71	69	34
Year to Date Starts	474	403	502
Median House Sold Price	\$ 264,640	\$ 270,000	\$ 250,000
Drilling Rigs in Panhandle	1	2	4
Oil Per Barrel	\$ 56.75	\$ 59.82	\$ 70.83
Natural Gas	\$ 4.03	\$ 4.33	\$ 3.20
Wheat Per Bushel	\$ 5.30	\$ 5.45	\$ 6.67
Fed Cattle Per CWT	\$ 229.00	\$ 230.00	\$ 190.00
Corn	\$ 4.37	\$ 4.30	\$ 4.43
Cotton (Cents Per Pound)	\$ 54.63	\$ 54.88	\$ 63.10
Milk	\$ 16.00	\$ 17.21	\$ 18.75

Prepare for the majestic dance of disclaimers!

This document was prepared by Amarillo National Bank on behalf of itself for distribution in Amarillo, Texas and is provided for informational purposes only. The information, opinions, estimates and forecasts contained herein relate to specific dates and are subject to change without notice due to market and other fluctuations. The information, opinions, estimates and forecasts contained in this document have been gathered or obtained from public sources believed to be accurate, complete and/or correct. The information and observations contained herein are solely statements of opinion and not statements of fact or recommendations to purchase, sell or make any other investment decisions.

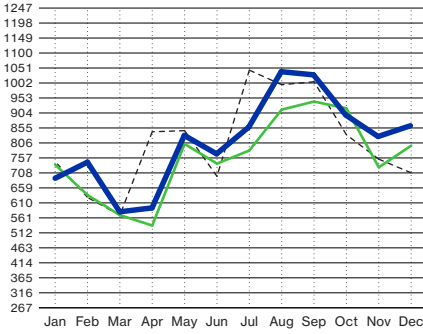
Economic Pulse Charts

2025

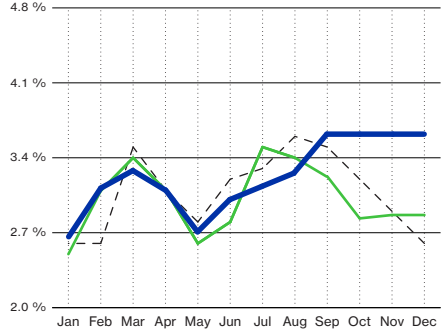
2024

2023

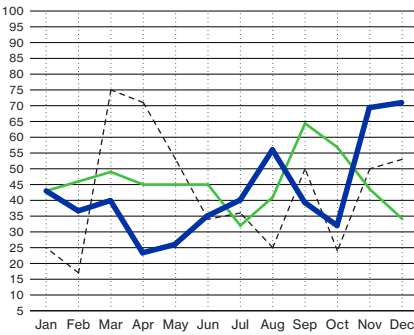
Hotel/Motel Receipt Tax (In Thousands)



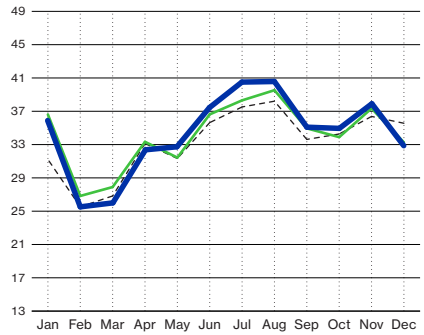
Percent Unemployment (State Adjusted Numbers)



Residential Housing Starts

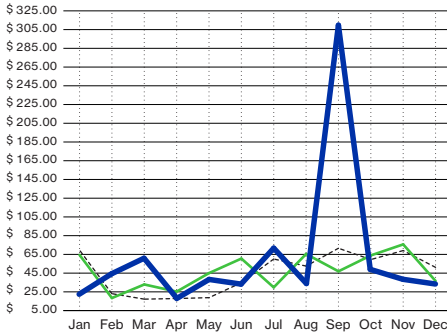


Airline Boardings (In Thousands)

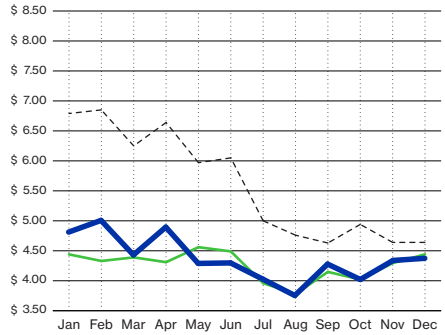


Building Permits

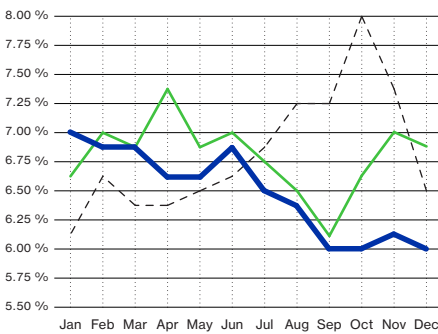
(Residential/Commercial - Millions of Dollars)



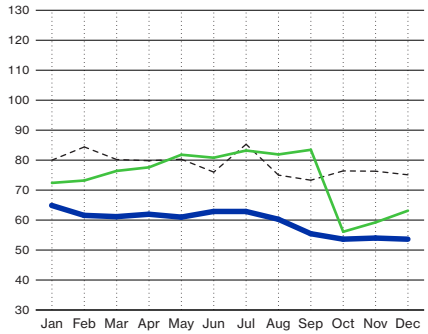
Corn (Price Per Bushel)

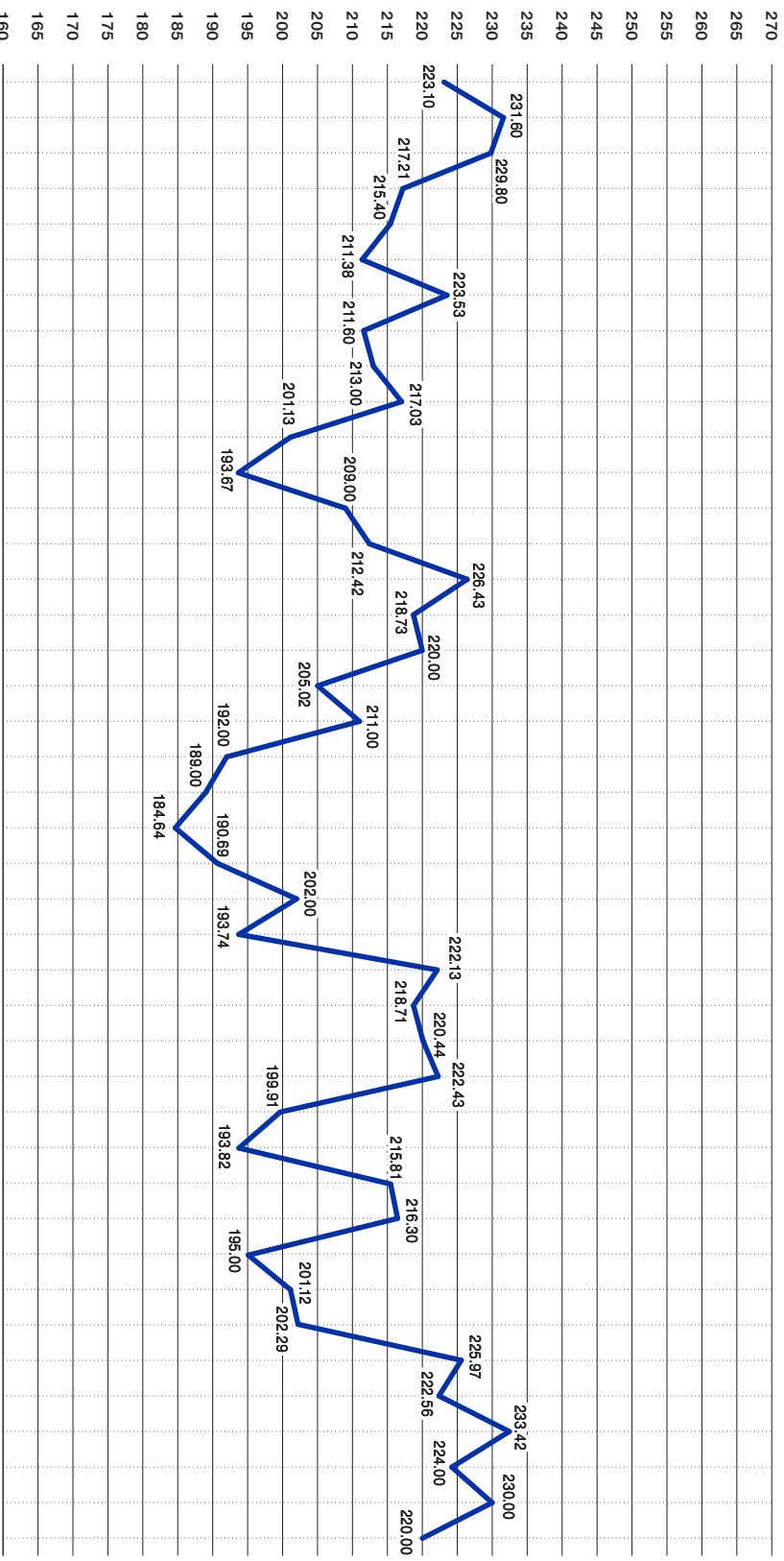


Interest Rates (30 Year Mortgage Rates)



Cotton (Cents Per Pound)





2022

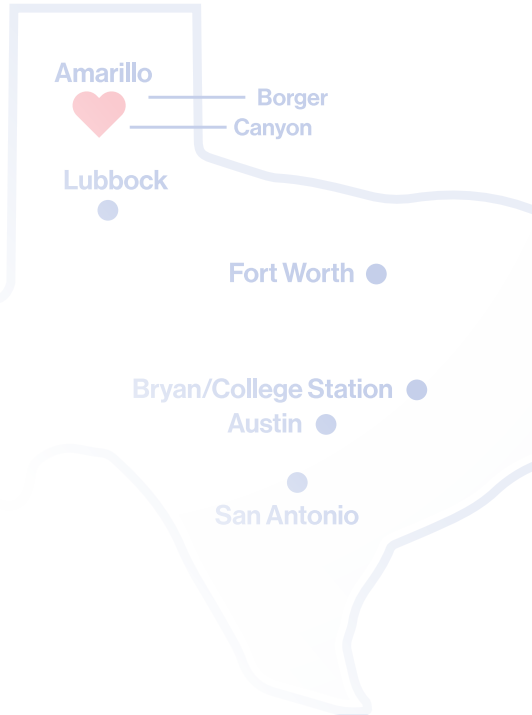
2023

2024

2025

Thanks \$11 Million!

- Over \$11 Million given back to our Texas communities in 2025
- 650 organizations supported across Texas
- 133 boards served by employees
- Over 3,000 employee volunteer hours



For more information
and our list of supported
organizations.

Generations of Giving.



Awesome Service