

# The Amarillo Economy

June 2026



**Amarillo  
National  
Bank**

**Awesome Service**

[anb.com](http://anb.com) | (806) 378-8000

Member FDIC | Equal Housing Lender

# Amarillo Economic Analysis

## **Without all of the Data Center activity, Amarillo's economy would be in the middle of a slowdown due to job losses.**

After Tyson dropped an entire shift, 1700 workers, we are also seeing losses in manufacturing and health care at 2 of Amarillo's most important employers.

Amarillo workers employed for May is down 223 from last year, while total Panhandle is up 750 (meaning 973 more working outside Amarillo – primarily data center construction). The unemployment rate jumped .4% to 3.5% (primarily Tyson). Panhandle wages are 8%; Amarillo 4%.

The Household Survey shows a decrease of 200 jobs from last year, and the Employers Survey shows a loss of 260 jobs.

Retail Sales are up 18% from 12 months ago. Year-to-Date Sales are up 11%. New Car Sales are down 4% from last June. Used Car Sales are down 1%.

Motel bed tax receipts are up 27% for the month, but down from last month (AirBnBs are filled by data center workers, so regular motel bookings and room rates are up).

Airline boardings are down slightly, as United Airlines dropped one flight daily.

Housing in Amarillo is better, with prices up 4%, and 30-Year Mortgage Rates down 50 basis points from a year ago. There were 34 more starts this month than a year ago-up 94%. Year to Date Starts are up 63%. Building Permits are up 118% from 12 months ago. Year to Date Building Permits are up 47% from 2025.

There are 3 active drilling rigs in the Panhandle where there were none last year. Oil Prices are still over \$75, and Natural Gas prices are down 22%.

Recent rains might help save corn this year. Prices are at \$4.66, up 6% from a year ago. Wheat is down 7%, and this was one of the worst years ever for the crop.

Milk Prices are down 14% to \$15.98, but area dairies are profitable due to cattle sales. Cattle continue to gain, as demand is steady and the herd isn't growing. Cattle Prices are up 14% from last June and are making over \$200 per head out of the Feedyard.



# Amarillo Economic Pulse

Economic Components	Current Month	Last Month	One Year Ago
Index (Base Jan. 88 @ 100)	245.86	233.16	201.12
Sales Tax Collection	\$ 10,020,371	\$ 11,198,931	\$ 8,482,019
Sales Tax Collections (Year to Date)	\$ 58,806,973	\$ 48,786,602	\$ 52,771,450
New Vehicle Sales	776	701	812
Used Vehicle Sales	1,813	1,545	1,836
Airline Boardings	37,561	33,299	38,516
Hotel/Motel Receipt Tax	\$ 972,738	\$ 1,018,264	\$ 762,291
Population	201,106	201,106	201,106
Employment – CLF*	140,039	139,623	139,558
Unemployment Rate*	% 3.50	% 3.20	% 3.00
Total Worker Employed* (Household Survey)	135,187	135,130	135,383
Total Worker Employed* (Employer Survey)	131,500	130,711	131,763
Average Weekly Wages	\$ 1,203.00	\$ 1,203.00	\$ 1,071.00
Gas Meters	70,022	70,098	70,104
Interest Rates (30 year mortgage rates)	% 6.375	% 6.625	% 6.875
Building Permits (Dollar Amount)	\$ 59,086,663	\$ 53,936,791	\$ 27,087,762
Year to Date Permits (Dollar Amount)	\$ 251,592,602	\$ 193,568,781	\$ 170,451,029
Residential Starts	68	53	35
Year to Date Starts	267	198	164
Median House Sold Price	\$ 265,000	\$ 269,000	\$ 253,810
Drilling Rigs in Panhandle	3	3	0
Oil Per Barrel	\$ 80.54	\$ 102.62	\$ 75.30
Natural Gas	\$ 3.11	\$ 2.88	\$ 3.99
Wheat Per Bushel	\$ 5.83	\$ 6.74	\$ 6.31
Fed Cattle Per CWT	\$ 257.00	\$ 260.00	\$ 225.00
Corn	\$ 4.66	\$ 4.90	\$ 4.37
Cotton (Cents Per Pound)	\$ 69.00	\$ 83.00	\$ 63.50
Milk	\$ 15.98	\$ 17.43	\$ 18.68

T-Minus 10... 9... All Legal Systems Go for Takeoff.

This document was prepared by Amarillo National Bank on behalf of itself for distribution in Amarillo, Texas and is provided for informational purposes only. The information, opinions, estimates and forecasts contained herein relate to specific dates and are subject to change without notice due to market and other fluctuations. The information, opinions, estimates and forecasts contained in this document have been gathered or obtained from public sources believed to be accurate, complete and/or correct. The information and observations contained herein are solely statements of opinion and not statements of fact or recommendations to purchase, sell or make any other investment decisions.

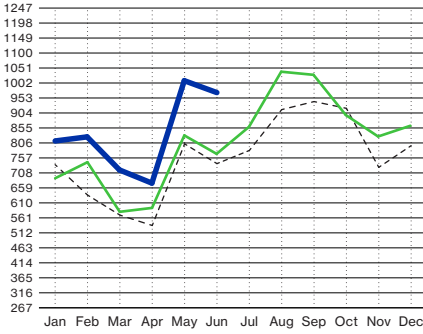
# Economic Pulse Charts

2026

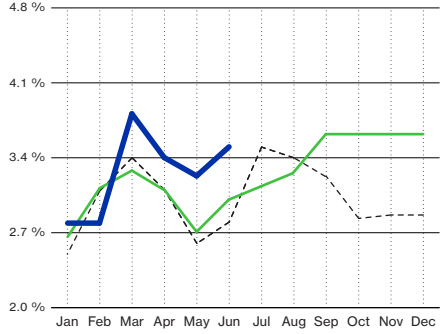
2025

2024

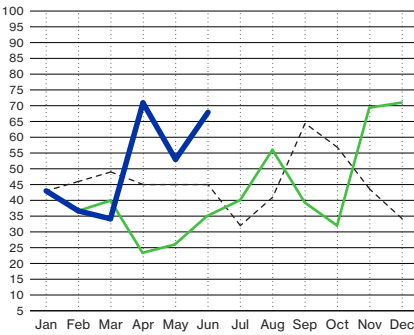
## Hotel/Motel Receipt Tax (In Thousands)



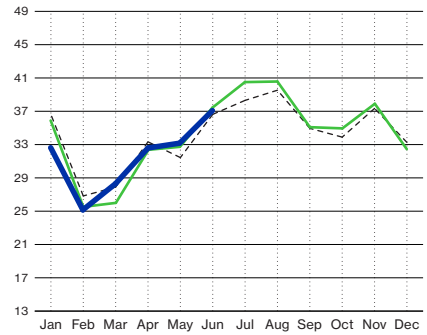
## Percent Unemployment (State Adjusted Numbers)



## Residential Housing Starts

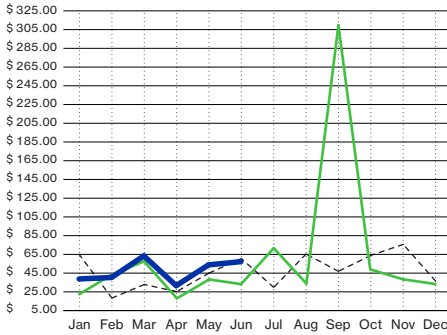


## Airline Boardings (In Thousands)

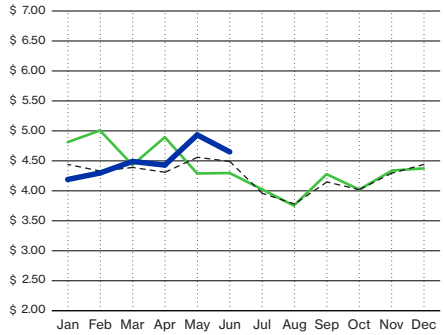


## Building Permits

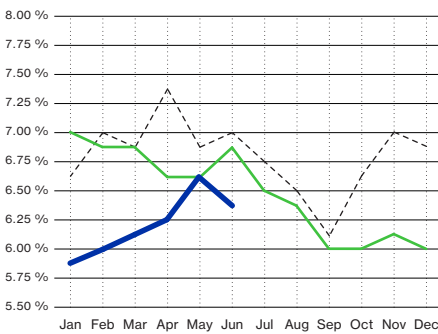
(Residential/Commercial - Millions of Dollars)



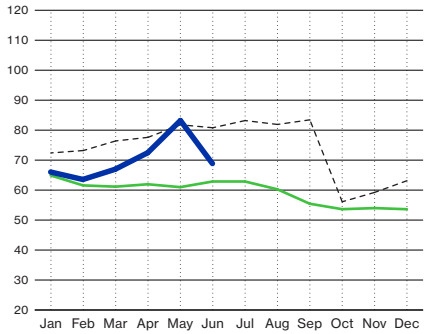
## Corn (Price Per Bushel)

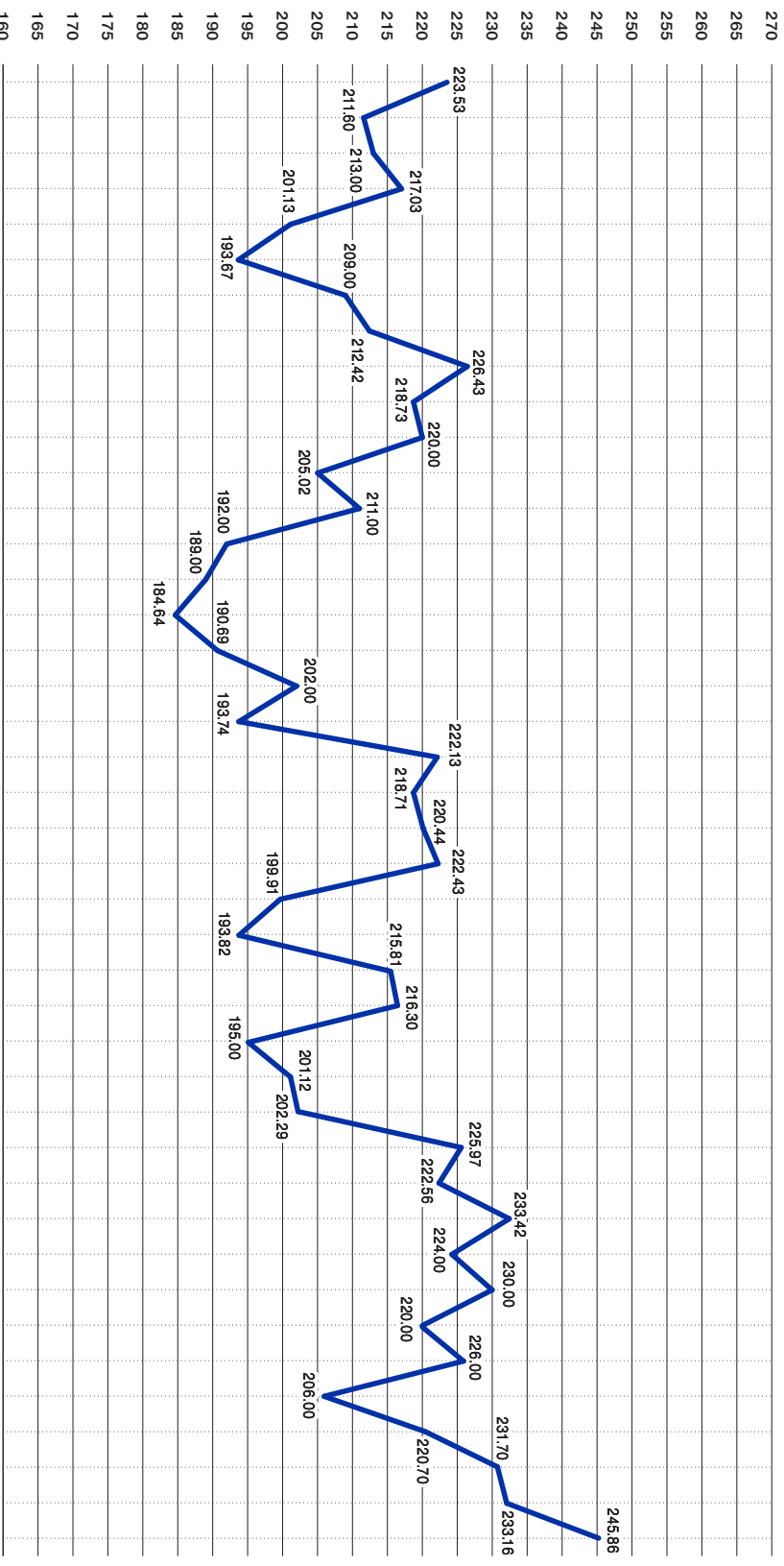


## Interest Rates (30 Year Mortgage Rates)



## Cotton (Cents Per Pound)





2023

2024

2025

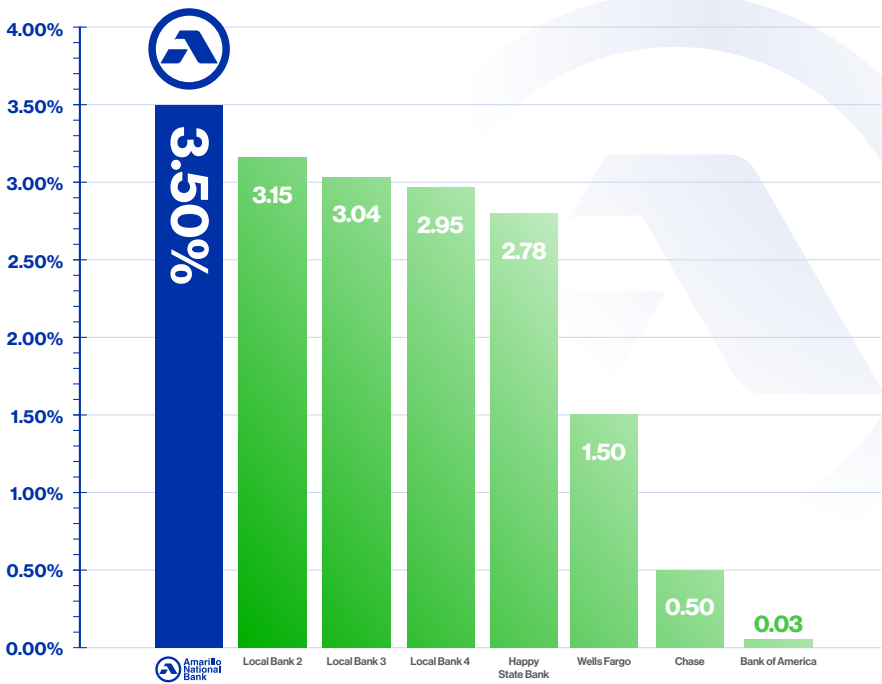
2026

Jan Feb Mar Apr May Jun Jul Aug Sep Oct Nov Dec Jan Feb Mar Apr May Jun Jul Aug Sep Oct Nov Dec Jan Feb Mar Apr May Jun

While other banks dip, we don't!

# We Pay MORE on 12 Month CDs!

CD Rate Comparison Chart APY%\*  
12 Months



\*Annual Percentage Yield (APY) is effective on June 19, 2026. \$1,000 minimum balance required. Penalty for early withdrawal may be imposed. Rates subject to change. Competitor rates as of June 19, 2026 based on published information.



Rates



Open a CD

We're Committed  
to Paying You  
a Great Rate!



Amarillo  
National  
Bank

Awesome Service

anb.com | 1-800-ANB-FREE  
Member FDIC | Equal Housing Lender